



More information about this yacht?
Call us: +32 475 80 17 31
Mail us: info@yachtlink.be



**Price: €10.000,00 VAT
Inclusive**

Vessel's Particulars

Make	Beneteau
Model	Flyer 7.25
Type	Motor boat
Built	1991
Material	Polyester
L.O.A	7.40 m
Beam	2.80 m
Draft	0.45 m
Location	Nieuwpoort (BE)

Yachtlink
European Yacht Sales bvba
Watersportlaan 15
8620 Nieuwpoort
Belgium
T +32 475 80 17 31
www.yachtlink.be

BENETEAU FLYER 7.25

MACHINERY

Engines : 1 x 260 bhp - MERCUISER LX4.3 petrol engine
Drives : Sterndrive with 3 blades propeller, fixed flaps.
Remarks : Engine is not original but renewed.

ACCOMMODATION

Dinette, galley with fridge, gas cooker and sink, head with manual flush toilet, sink, mid-cabin.

NAVIGATION AIDS

Compass, VHF.

ELECTRICITY

220 volt shore supply, battery main switch, battery charger, 2 x batteries.

GENERAL EQUIPMENT

Anchor, anchor chain, swimming platform with ladder, pressurized hot/cold water, warm water boiler.

Fuel tank: 300 Ltr
Water tank: 90 Ltr

BOAT IN FAIR CONDITION WITH SOME WORK ON IT. PULL PIT AND ANCHOR CHAIN FAIRLEAD BENT AND TO BE RENEWED.

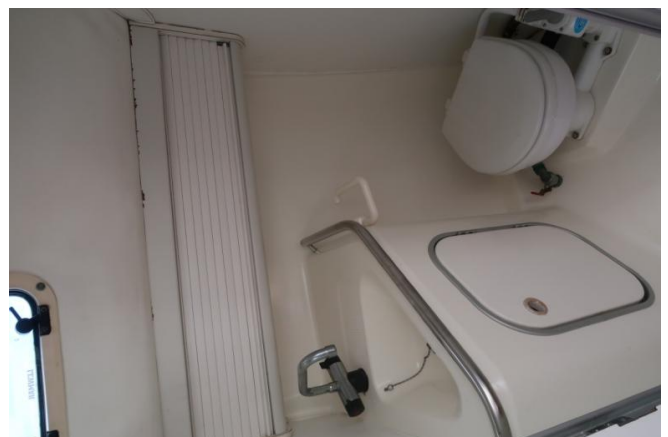
The above information is believed to be correct, but no responsibility is accepted for errors or omissions and these particulars and statement shall not form any contract.



More information about this yacht?

Call us: +32 475 80 17 31

Mail us: info@yachtlink.be





More information about this yacht?

Call us: +32 475 80 17 31

Mail us: info@yachtlink.be

